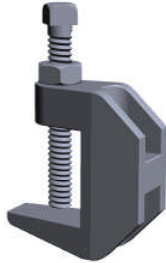



  
 3/8" thru 1/2"



## BEAM CLAMPS

### Large Mouth Model BC2

**SIZE:**

3/8" thru 3/4" rod sizes

**FINISH:**

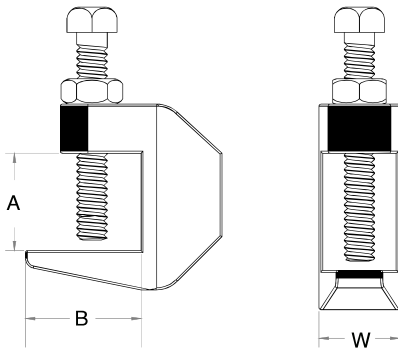
Electro-Galvanized

**FUNCTION:**

Structural attachment to top or bottom of metal beams, purlins, channel, or angle iron

**FEATURES:**

- Set screw made of hardened steel
- Complied with Federal Specification A-A-1192A (Type 19) and MSS SP-69 (Type 19)



### BC2 - Galv.: Loads (LBS) • Weights (LBS) • Dimensions (IN)

ITEM CODE EG. BC2	ROD SIZE	MAX LOAD TOP	MAX LOAD BOTTOM	WEIGHT	OPENING A	B	W
BC2-0037EG	3/8	500	250	0.37	1 1/4	1 1/4	7/8
BC2-0050EG	1/2	950	760	0.35	1 1/4	1 5/16	1 1/16

### BC2 - Plain.: Loads (LBS) • Weights (LBS) • Dimensions (IN)

ITEM CODE PLAIN BC2	ROD SIZE	MAX LOAD TOP	MAX LOAD BOTTOM	WEIGHT	OPENING A	B	W
BC2-0037P	3/8	500	250	0.37	1 1/4	1 1/4	7/8
BC2-0050P	1/2	950	760	0.35	1 1/4	1 5/16	1 1/16