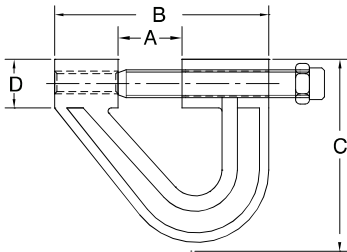


BEAM CLAMPS



PURLIN CLAMPS

Model BC3

SIZE:

3/8" rod sizes

FINISH:

Electro-Galvanized

FUNCTION:

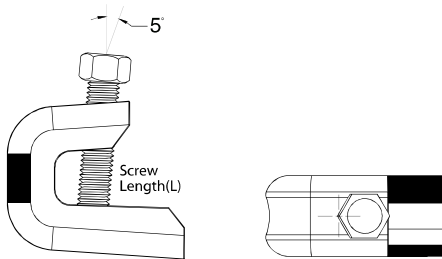
Structural attachment to lower beams or purlins with 45° flanges up to 2" long and 90° flanges up to 1 1/2" high

FEATURES:

- Set screw made of hardened steel

BC3: Loads (LBS) • Weights (LBS) • Dimensions (IN)

ITEM CODE EG. BC3	ITEM CODE PLAIN BC3	ROD SIZE	WEIGHT	OPENING A	B	C	D
BC3-0037EG	BC3-0037P	3/8	0.82	1	3 3/8	2 7/8	3/4



BEAM CLAMPS

Light Duty Steel

Figure BC4

SIZE:

1/4" thru 1/2" rod sizes

FINISH:

Electro-Galvanized

FUNCTION:

Structural attachment to lower beams or purlins with 45° flanges up to 2" long and 90° flanges up to 1 1/2" high

FEATURES:

- Set screw made of hardened steel

BC4: Loads (LBS) • Weights (LBS) • Dimensions (IN)

ITEM CODE	ROD SIZE	MAX LOAD	WEIGHT
BC4-0025EG	1/4	100	0.22
BC4-0032EG	5/16	100	0.56
BC4-0037EG	3/8	200	0.73
BC4-0050EG	1/2	200	1.35