

BEAM CLAMPS



ADJUSTABLE BEAM CLAMPS

Center Load Model BC7

SIZE:

3/8" thru 7/8"

FINISH:

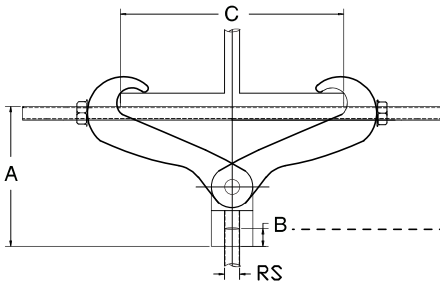
Electro-Galvanized

FUNCTION:

Used to support hanger rod under the center of a beam

FEATURES:

- Works with beam flanges up to 5/8" thick and 2-5/8" to 7" wide
- Designed to be used with rod eye or malleable extension
- Conforms with Federal Specification WW-H-171 (Type 30), Manufacturers Standardization Society (MSS) SP-58 and SP-69



*Use with extension piece (not included)
Please refer to the particular manufactures' specifications for correct takeouts

BC7 – Galv.: Loads (LBS) • Weights (LBS) • Dimensions (IN)

ITEM CODE EG. BC7	ROD SIZE	MAX LOAD	WEIGHT	C=2 3/8"	C=3"	C=4"	C=5"	C=6"	C=7"	B
BC7-0037EG	3/8	610	2.49	4 3/4	4 3/4	4 1/2	4 1/8	3 7/8	3 1/8	7/8
BC7-0037EG	1/2	1130	2.49	4 7/8	4 3/4	4 3/4	4 1/4	4	3 1/4	1 5/16
BC7-0037EG	5/8	1365	2.49	4 15/16	4 7/8	4 3/4	4 3/8	4	3 15/16	1 3/8
BC7-0037EG	3/4	1365	2.49	5 3/16	5 1/8	5	4 5/8	4 1/4	3 9/16	1 3/8
BC7-0037EG	7/8	1365	2.49	5 1/4	5 1/4	5 1/16	4 3/4	4 3/8	3 5/8	1 1/4

BC7 – Plain: Loads (LBS) • Weights (LBS) • Dimensions (IN)

ITEM CODE PLAIN BC7	ROD SIZE	MAX LOAD	WEIGHT	C=2 3/8"	C=3"	C=4"	C=5"	C=6"	C=7"	B
BC7-0037P	3/8	610	2.49	4 3/4	4 3/4	4 1/2	4 1/8	3 7/8	3 1/8	7/8
BC7-0037P	1/2	1130	2.49	4 7/8	4 3/4	4 3/4	4 1/4	4	3 1/4	1 5/16
BC7-0037P	5/8	1365	2.49	4 15/16	4 7/8	4 3/4	4 3/8	4	3 15/16	1 3/8
BC7-0037P	3/4	1365	2.49	5 3/16	5 1/8	5	4 5/8	4 1/4	3 9/16	1 3/8
BC7-0037P	7/8	1365	2.49	5 1/4	5 1/4	5 1/16	4 3/4	4 3/8	3 5/8	1 1/4