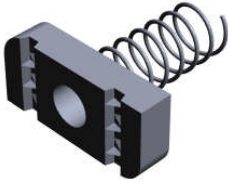


# STRUT NUTS



## CHANNEL NUT

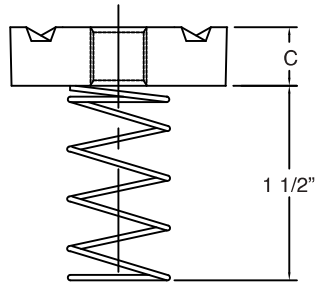
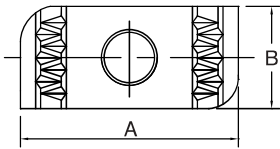
With Long Spring  
Model NUTLS

**SIZE:**

1/4" thru 7/8"

**FINISH:**

Electro-zinc plated



### Channel Nut: Weights (LBS) • Dimensions (IN)

ITEM CODE	THREAD SIZE	WEIGHT	A	B	C
NUTLS-0025EG	1/4 - 20	0.07	1 3/8	3/4	1/4
NUTLS-0037EG	3/8 - 16	0.08	1 3/8	3/4	3/8
NUTLS-0050EG	1/2 - 13	0.10	1 3/8	3/4	1/2
NUTLS-0062EG	5/8 - 11	0.12	1 3/8	1 1/8	1/2
NUTLS-0075EG	3/4 - 10	0.20	1 3/8	1 1/8	1/2
NUTLS-0087EG	7/8 - 9	0.20	1 3/8	1 1/8	1/2