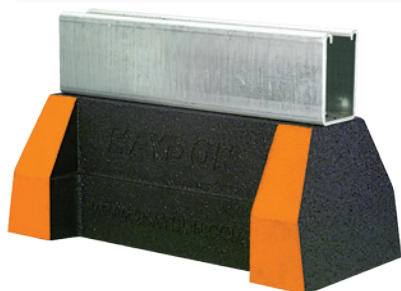


HBS-6 SERIES

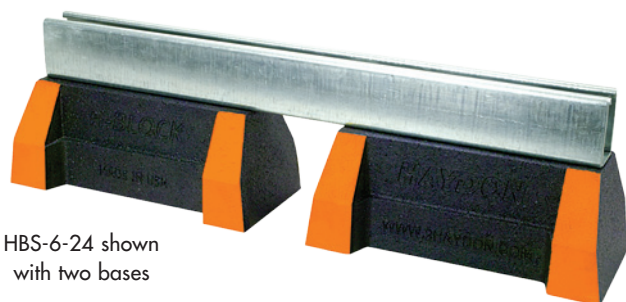


Like all of the H-Block supports, the HBS-6 Series is perfect for supporting gas and refrigeration piping systems, cable tray, electrical conduit, multiple lines, HVAC equipment and many other applications.

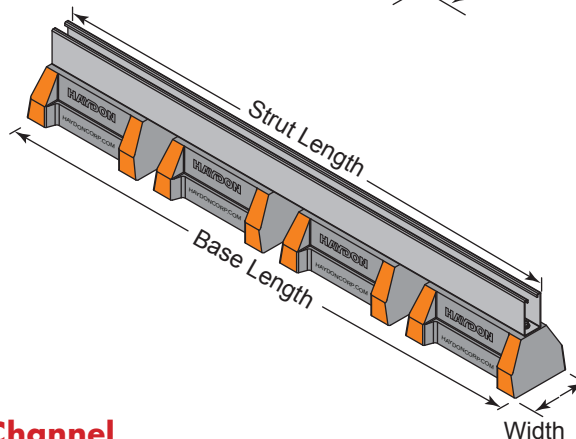
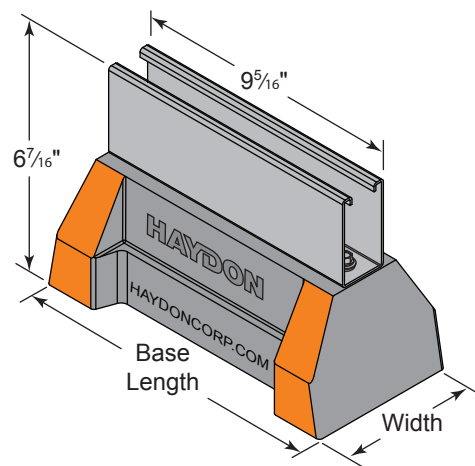
The HBS-6 Series provides a longer mounting surface with strut lengths up to 46³/₈"

The HBS-6 Series is UV resistant and suitable for installation on most types of roofing material or other flat surfaces.

Roof supports come pre-assembled



HBS-6-24 shown with two bases



Specifications – HBS-6 Series

H-Block Support with: 2⁷/₁₆" H-122 Channel

MATERIAL - 100% recycled rubber, UV resistant

HBS Support With 2⁷/₁₆" H-122 Pre-Galv. Steel Channel

Model No.	Height	Width	No. of Bases Required	Strut Length	Base Length	Weight (Lbs)	Uniform Load Capacity (Lbs) *
HBS-6-10-H-122-PG	6 ⁷ / ₁₆ " (165mm)	5" (127mm)	1	9.312" (237mm)	10 ⁷ / ₈ " (276mm)	6.69	2,500 *
HBS-6-24-H-122-PG			2	22.375" (568mm)	24" (610mm)	14.13	5,000 *
HBS-6-36-H-122-PG			3	34.375" (873mm)	36" (914mm)	21.35	7,500 *
HBS-6-48-H-122-PG			4	46.375" (1178mm)	48" (1219mm)	28.58	10,000 *

* This load is only for the capacity of the components in this assembly. Please consult roofing manufacturer or engineer for roof load capacity