



HAYDON[®]

H-STRUT DIVISION



- **100% Recycled Rubber!**
- **LEED[®] Certifiable**
- **UV Resistant**
- **Made in the USA**

H-BLOCK Rooftop Support Systems





WHY BUY FROM HAYDON® CORPORATION?

HAYDON® ...A COMPANY YOU CAN COUNT ON

As a leader in the industry, we pride ourselves on a 50-year dedication to quality and service. It begins with the materials we use, and continues with an ongoing relationship with our satisfied and loyal customer base.

■ UL Listed Electrical Products

- Channel Raceway
- Channel Raceway Fittings
- Channel Raceway Base
- Channel Raceway Closure Strip



■ LEED® Certifiable

- 4 & 5



■ Buy American Act Compliant

■ American Reinvestment Recovery Act Compliant (A.R.R.A)

Demanding clients deserve the best. Haydon Corporation's commitment to quality ensures that our customers receive unparalleled levels of service -- where knowledgeable sales staff knows the business -- and more importantly, your needs.

TEAM HAYDON

welcomes the opportunity to prove this to you. We look forward to discussing your strut needs and requirements to help build a mutually rewarding relationship.



H-BLOCK Testing:

Rooftop Supports Have Been Tested By An Accredited Independent Laboratory To The Following:

- ASTM D575 Method B – Modified – Compression/Deflection
- ASTM D1171 Modified – Ozone Resistance
- Freeze/Thaw Environmental Simulation

H-Strut Channel Specifications

Channel Material

H-STRUT channels are produced from prime structural steel covered by the following specifications.

- Pre-Galvanized Steel. ASTM A-653
- Plain Steel ASTM A-1011-SS
- Aluminum (Type 6063T6) ASTM B-221
- Stainless Steel (Type 304 & 316) ASTM A-240
- Other materials and specifications available on request.

Channel Finishes

All H-STRUT channels are stocked in pre-galvanized and powder coated Supr-Green. Some sizes are stocked in zinc trivalent chromium, PVC or hot dipped galvanized.

- Hot Dipped Galvanized. ASTM A-123
- Zinc Trivalent Chromium ASTM B-633-85
- Powder Coated Supr-Green. ASTM B-117-97
- PVC Coating 40 ML Thickness - Available Upon Request

Note: Consult roofing manufacturer or engineer for roof loading compatibility.

A wide range of pipe clamps and straps can be used with these supports. There is a small set of examples on pages 12-13. Please refer to Haydon's Metal Framing Engineering Catalog for additional options



H-BLOCK SPECIAL FEATURES



- 100% Recycled Rubber
- LEED Certifiable
- Meets the Buy America Act
- American Reinvestment Recovery Act (A.R.R.A.)
- Independent Laboratory Tested
- Resistance to Freeze and Thaw
- No Deteriorations
- All 4 Corners coated with high visibility safety orange for maximum visibility
- Dampens Vibrations
- Compatible with most rooftop materials

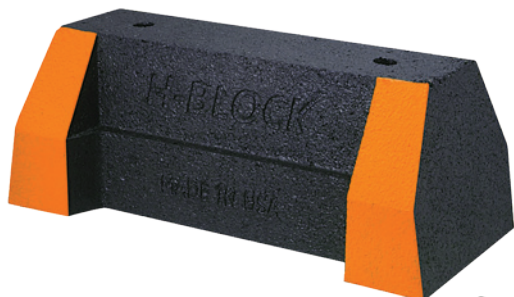


Our product line has systems to support all of the following applications:

- Solar Racking
- Pipe & Conduit supports
- Duct supports
- HVAC supports
- Cable Tray Systems
- Air Conditioning supports
- Roof Walkway supports

The channel for H-Block support assemblies includes a variety of options. The strut can be made in special lengths, finishes, and alloys including Aluminum, Stainless Steel both 304 & 316, PVC coated, Powder coated, Zinc Trivalent Chromium, Pre-Galvanized and Hot Dipped Galvanized.

HBS-BASE SERIES



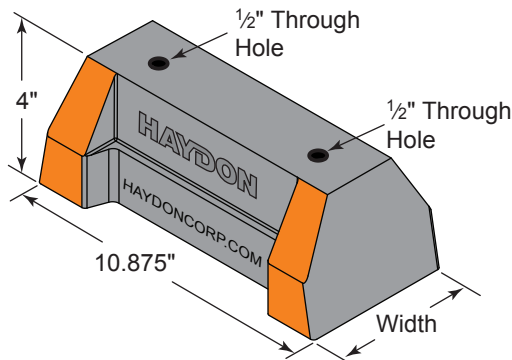
The HBS-Base Series is UV resistant and suitable for installation on most types of roofing material or other flat surfaces. Can be used as a curb (sleeper) replacement. Screw fasteners can be used to attach one or two hole pipe straps or a piece of strut (not included).

Specifications – H-Block Support

MATERIAL - 100% recycled rubber, UV resistant



Base Area
Shown = 33.1 Sq. In.
For use in bearing calculations



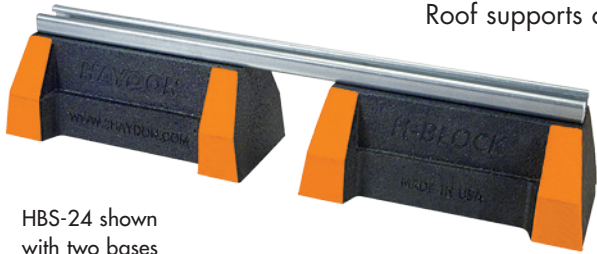
HBS-Base Series

Model No.	Height	Width	Base Length	Weight	Uniform Load Capacity (Lbs) *
HBS-Standard-Base Only	4" (101mm)	5" (127mm)	10-7/8" (276mm)	4.80 lbs.	2,500 *

* This load is only for the capacity of the components in this assembly. Please consult roofing manufacturer or engineer for roof load capacity



HBS SERIES



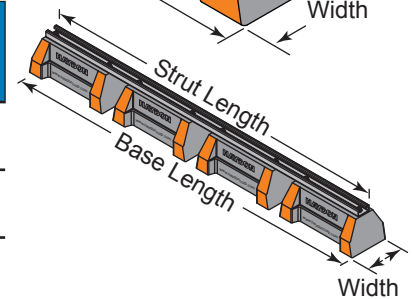
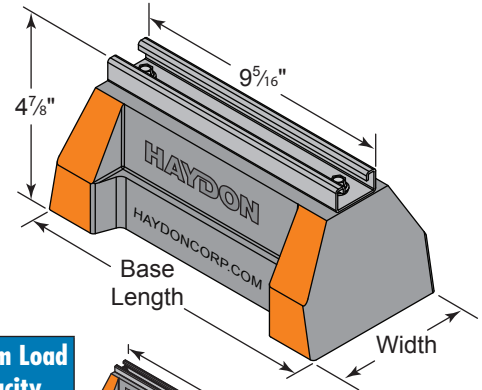
HBS-24 shown with two bases

Like all of the H-Block supports, the HBS Series is perfect for supporting gas and refrigeration piping systems, cable tray, electrical conduit, multiple lines, HVAC equipment and many other applications.

The HBS Series provides a longer mounting surface with strut lengths up to 46³/₈" Standard strut mount pipe clamps are used to secure the pipes. (See page 12).

The HBS Series is suitable for installation on most types of roofing material or other flat surfaces.

Roof supports come pre-assembled



HBS-Support With 1³/₁₆" H-164 Pre-Galv. Steel Channel

Model No.	Height	Width	No. of Bases Required	Strut Length	Base Length	Weight (Lbs)	Uniform Load Capacity (Lbs) *
HBS-10-H-164-PG	4 ⁷ / ₈ " (124mm)	5" (127mm)	1	9.312" (237mm)	10- ⁷ / ₈ " (276mm)	5.62	2,500 *
HBS-24-H-164-PG			2	22.375" (568mm)	24" (610mm)	11.56	5,000 *
HBS-36-H-164-PG			3	34.375" (873mm)	36" (914mm)	17.41	7,500 *
HBS-48-H-164-PG			4	46.375" (1178mm)	48" (1219mm)	23.25	10,000 *

* This load is only for the capacity of the components in this assembly. Please consult roofing manufacturer or engineer for roof load capacity

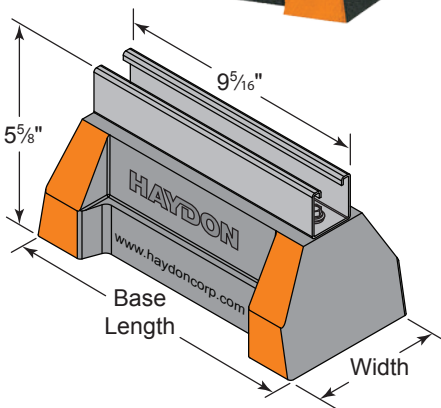
Specifications – HBS Series

H-Block Support with:

1³/₁₆" H-164 Channel, or

1⁵/₈" H-132 Channel

MATERIAL - 100% recycled rubber, UV resistant

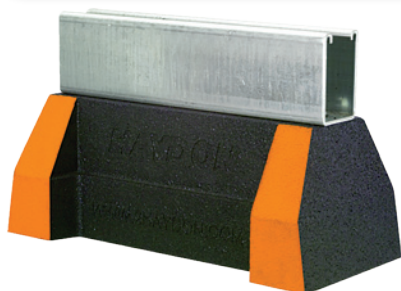


HBS-Support With 1⁵/₈" H-132 Pre-Galv. Steel Channel

Model No.	Height	Width	No. of Bases Required	Strut Length	Base Length	Weight (Lbs)	Uniform Load Capacity (Lbs) *
HBS-10-H-132-PG	5- ⁵ / ₈ " (143mm)	5" (127mm)	1	9.312" (237mm)	10- ⁷ / ₈ " (276mm)	6.26	2,500 *
HBS-24-H-132-PG			2	22.375" (568mm)	24" (610mm)	13.10	5,000 *
HBS-36-H-132-PG			3	34.375" (873mm)	36" (914mm)	19.77	7,500 *
HBS-48-H-132-PG			4	46.375" (1178mm)	48" (1219mm)	26.44	10,000 *

* This load is only for the capacity of the components in this assembly. Please consult roofing manufacturer or engineer for roof load capacity

HBS-6 SERIES

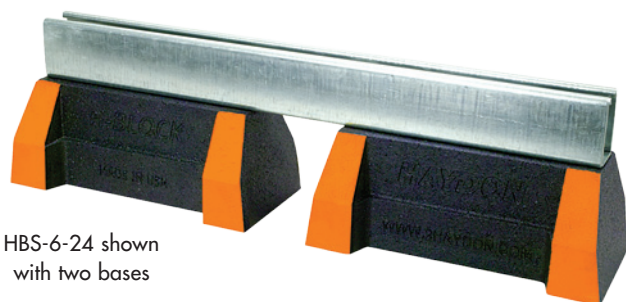


Like all of the H-Block supports, the HBS-6 Series is perfect for supporting gas and refrigeration piping systems, cable tray, electrical conduit, multiple lines, HVAC equipment and many other applications.

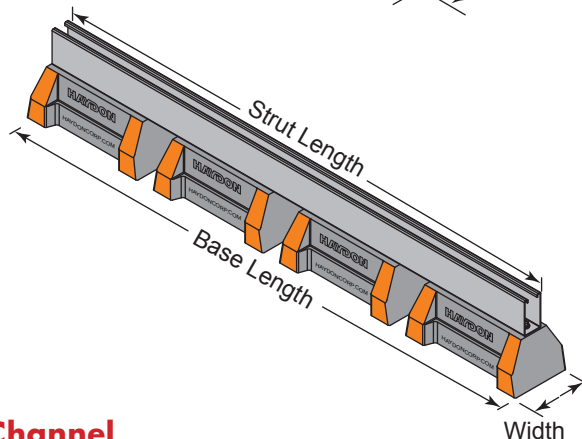
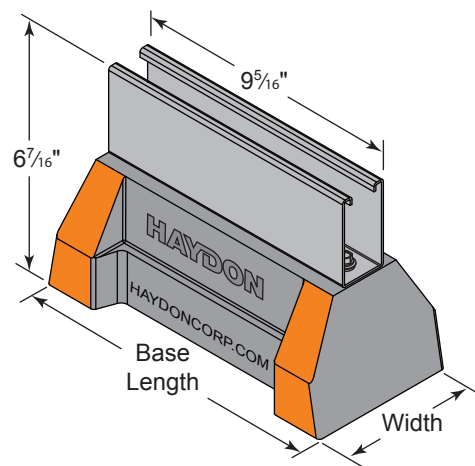
The HBS-6 Series provides a longer mounting surface with strut lengths up to 46³/₈"

The HBS-6 Series is UV resistant and suitable for installation on most types of roofing material or other flat surfaces.

Roof supports come pre-assembled



HBS-6-24 shown with two bases



Specifications – HBS-6 Series

H-Block Support with: 2⁷/₁₆" H-122 Channel

MATERIAL - 100% recycled rubber, UV resistant

HBS Support With 2⁷/₁₆" H-122 Pre-Galv. Steel Channel

Model No.	Height	Width	No. of Bases Required	Strut Length	Base Length	Weight (Lbs)	Uniform Load Capacity (Lbs) *
HBS-6-10-H-122-PG	6 ⁷ / ₁₆ " (165mm)	5" (127mm)	1	9.312" (237mm)	10 ⁷ / ₈ " (276mm)	6.69	2,500 *
HBS-6-24-H-122-PG			2	22.375" (568mm)	24" (610mm)	14.13	5,000 *
HBS-6-36-H-122-PG			3	34.375" (873mm)	36" (914mm)	21.35	7,500 *
HBS-6-48-H-122-PG			4	46.375" (1178mm)	48" (1219mm)	28.58	10,000 *

* This load is only for the capacity of the components in this assembly. Please consult roofing manufacturer or engineer for roof load capacity



HBS-CB BRIDGE SERIES



Like all of the H-Block supports, the HBS-CB-Bridge Series is perfect for supporting gas and refrigeration piping systems, cable tray, electrical conduit, multiple lines, HVAC equipment and many other applications.

The HBS-CB Series provides a longer mounting surface with strut lengths up to 60"

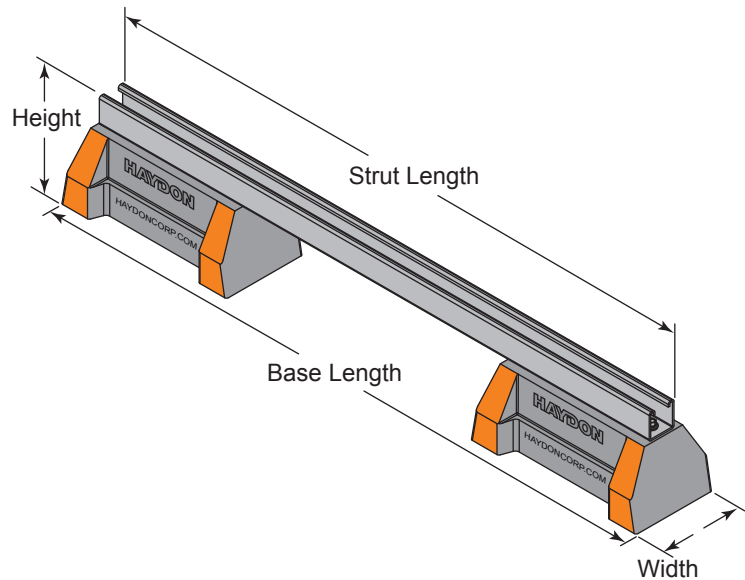
The HBS-CB-Bridge Series is UV resistant and suitable for installation on most types of roofing material or other flat surfaces.

Roof supports come pre-assembled

Specifications – HBS-CB Series

Base - Bridge style support with two H-Block Bases & 1⁵/₈" Galv. H-132 Steel Channel

MATERIAL - 100% recycled rubber, UV resistant



HBS-CB-Bridge Series - Bridge Length Supports With 2 HBS Bases and Channel

Model No.	Height	Width	Strut Length	Base Length	Weight (Lbs)	Uniform Load Capacity (Lbs) *
HBS-CB10-28-H-132-PG	5 ⁵ / ₈ " (143mm)	5" (127mm)	28" (711mm)	29- ³ / ₄ " (756mm)	13.96	1,491 *
HBS-CB10-36-H-132-PG			36" (914mm)	37- ³ / ₄ " (959mm)	15.18	1,160 *
HBS-CB10-42-H-132-PG			42" (1067mm)	43- ³ / ₄ " (1111mm)	16.09	994 *
HBS-CB10-50-H-132-PG			50" (1270mm)	51- ³ / ₄ " (1314mm)	17.31	835 *
HBS-CB10-60-H-132-PG			60" (1524mm)	61- ³ / ₄ " (1568mm)	18.84	696 *

* This load is only for the capacity of the components in this assembly. Please consult roofing manufacturer or engineer for roof load capacity

HBS-CE EXTENSION SERIES



HBS-CE-Extension Series is perfect for supporting gas and refrigeration piping systems, cable tray, electrical conduit, multiple lines, HVAC equipment and many other applications.

The HBS-CE-Extension is UV resistant and suitable for installation on most types of roofing material or other flat surfaces.

Roof supports come pre-assembled

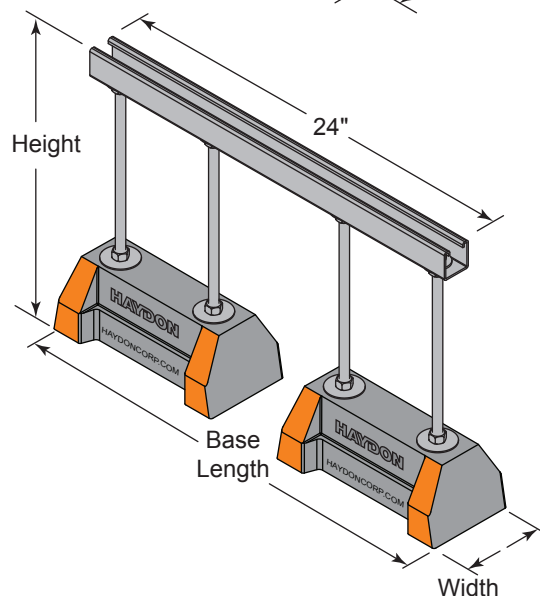
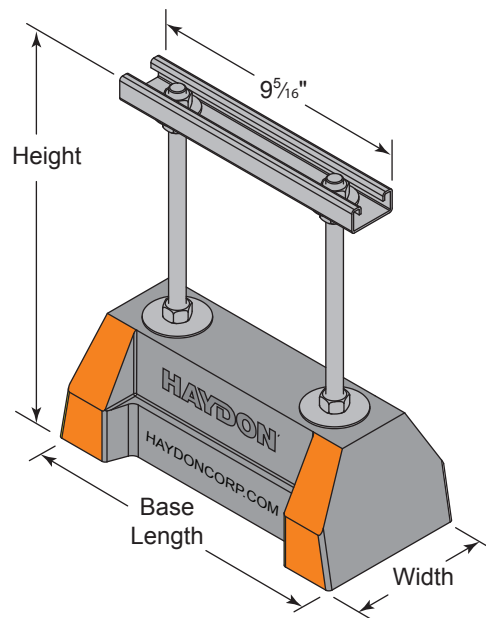
Specifications – HBS-CE

Two H-Block Bases and Threaded Rod Riser with:

1 $1\frac{3}{16}$ " H-164 Channel, or

1 $1\frac{5}{8}$ " H-132 Channel

MATERIAL - 100% recycled rubber,
UV resistant



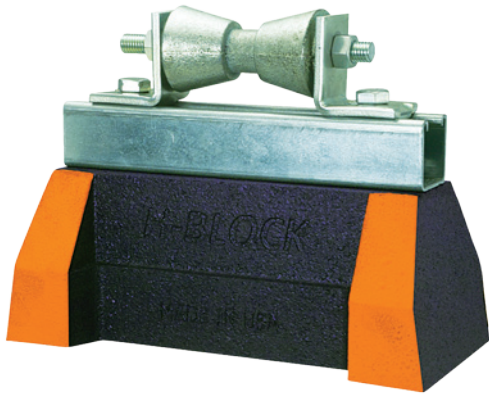
HBS-CE-Extension Series Support With Threaded Rod Extension and Channel

Model No.	Height	Width	Strut Length	Strut Size	Base Length	Weight (Lbs)	Uniform Load Capacity (Lbs) *
HBS-CE10-8-H-164-PG	8" (203mm)	5" (127mm)	9.312" (237mm)	$1\frac{3}{16}$ " H-164	$10\frac{7}{8}$ " (276mm)	6.89	1,000 *
HBS-CE10-12-H-164-PG	12" (305mm)					7.34	1,000 *
HBS-CE24-16-H-132-PG	16" (406mm)		24.000" (610mm)	$1\frac{5}{8}$ " H-132	26" (660mm)	15.85	2,000 *

* This load is only for the capacity of the components in this assembly.
Please consult roofing manufacturer or engineer for roof load capacity

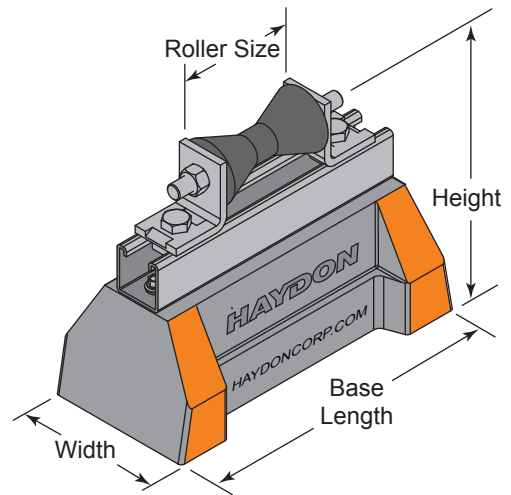


HBS-R ROLLER SERIES



The HBS-R Series are designed for superior support of gas and refrigeration pipes. The roller allows for longitudinal movements of the pipe. This support is suitable for most types of roofing material or other flat surfaces.

Roof supports come pre-assembled



Specifications – HBS-R Series

H-Block Support with:
1⁵/₈" H-132 Channel

MATERIAL - 100% recycled rubber,
UV resistant

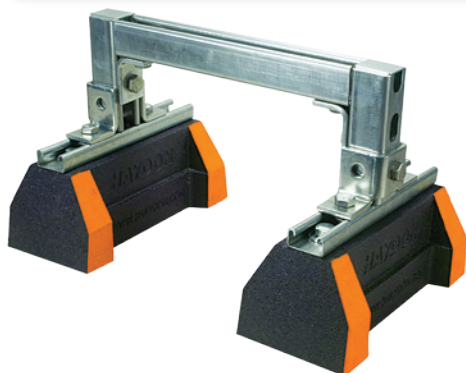
PIPE O.D. - 1" thru 10"

HBS-R-Roller-Series With 1-⁵/₈" H-132 Pre-Galv. Steel Channel With Rollers

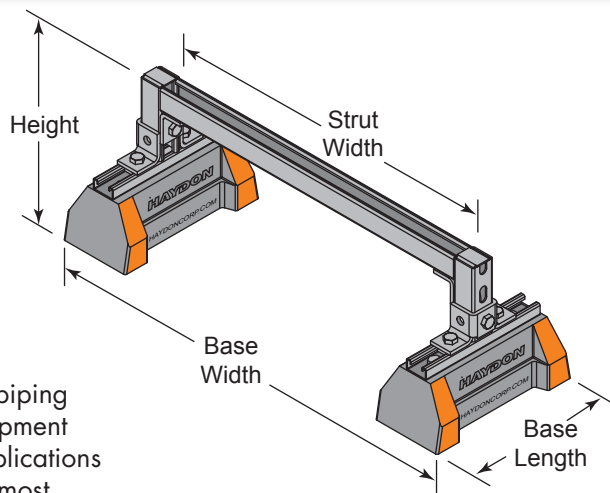
Model No.	Pipe Size (O.D.)	Overall Height	Height to Roller Center	Strut Length	Width	Base Length	No. of Bases	Weight (Lbs)	Uniform Load Capacity (Lbs) *
HBS-R10-1-2-H-132-PG	1" to 2" (25 to 51mm)	8" (203mm)	7" (178mm)	9.312" (237mm)	5" (127mm)	10- ⁷ / ₈ " (276mm)	1	9.13	2,500 *
HBS-R10-2-3 ¹ / ₂ -H-132-PG	2" to 3- ¹ / ₂ " (51 to 89mm)						1	8.94	2,500 *
HBS-R10-4-6-H-132-PG	4" to 6" (102 to 152mm)						1	9.37	2,500 *
HBS-R24-8-10-H-132-PG	8" to 10" (203 to 1254mm)	10- ⁵ / ₁₆ " (262mm)	8- ⁵ / ₈ " (219mm)			24" (610mm)	2	21.26	2,500 *

* This load is only for the capacity of the components in this assembly.
Please consult roofing manufacturer or engineer for roof load capacity

HBS-CES SERIES



The HBS-CES-Medium Series can support gas and refrigeration piping systems, cable tray, electrical conduit, multiple lines, HVAC equipment and many other applications. They are designed for rooftop applications requiring a heavier load bearing capacity, and are suitable for most types of roofing material or other flat surfaces.



Raised Bridge Length With 2 HBS Bases 1⁵/₈" H-132 Pre-Galv Steel Channel

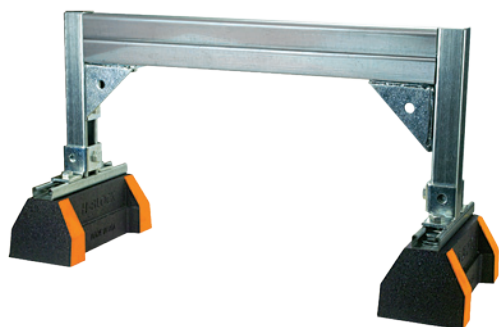
Model No.	Height	Base Width	Strut Width	Base Length	Weight (Lbs)	Uniform Load Capacity (Lbs) *
HBS-CES-10-12-H-132-PG	10" (254mm)	18- ⁵ / ₈ " (473mm)	12" (305mm)	10- ⁷ / ₈ " (276mm)	19.35	3,000 *
HBS-CES-10-24-H-132-PG		30- ⁵ / ₈ " (763mm)	24" (610mm)		21.05	1,500 *

* This load is only for the capacity of the components in this assembly. Please consult roofing manufacturer or engineer for roof load capacity

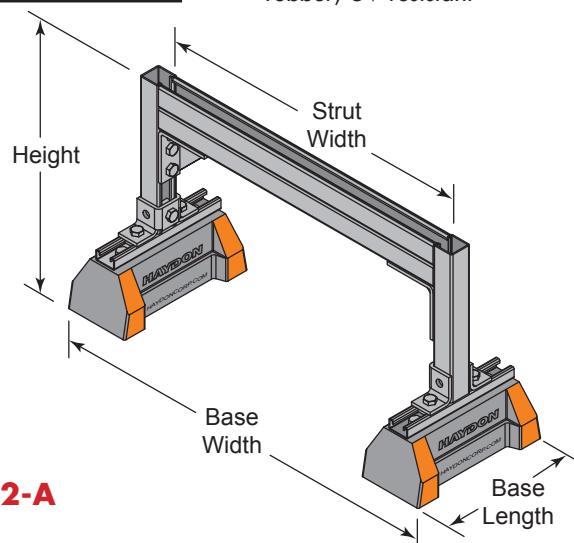
Specifications – HBS-CES Series

Two H-Block bases with
1⁵/₈" H-132 Strut, or
3¹/₄" H-132-A
back-to-back Strut

MATERIAL - 100% recycled rubber, UV resistant



The HBS-CES-Heavy Series is designed for rooftop applications requiring a heavier load bearing capacity. It is suitable for most types of roofing material or other flat surfaces.



Raised Bridge Length With 2 HBS Bases 3¹/₄" H-132-A Back-to-Back Pre-Galv Steel Channel

Model No.	Height	Base Width	Strut Width	Base Length	Weight (Lbs)	Uniform Load Capacity (Lbs) *
HBS-CES-16-24-H-132-A-PG	16" (406mm)	30- ⁵ / ₈ " (763mm)	24" (610mm)	10- ⁷ / ₈ " (276mm)	30.62	3,500 *
HBS-CES-16-36-H-132-A-PG		42- ⁵ / ₈ " (1067mm)	36" (914mm)		32.96	3,250 *

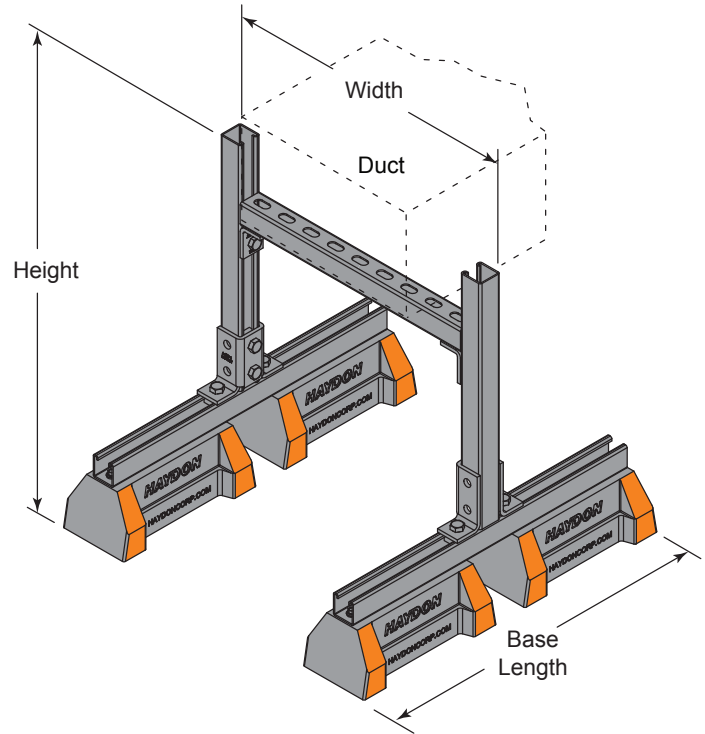
* This load is only for the capacity of the components in this assembly. Please consult roofing manufacturer or engineer for roof load capacity



HBS-DSFW FIXED WIDTH DUCT SUPPORT



The HBS-DSFW Series is designed specifically for supporting duct work.



Specifications – HBS-DSFW

Fixed Width & Height.

All hardware required for assembly is included.

BASE MATERIAL - 100% recycled rubber, UV resistant

Crossbeams - 1⁵/₈" H-132-RS3 Channel

HBS-DS Duct Support Series With Fixed Width And Adjustable Height

Model No.	Height	Width	Base Length	No. of Bases	Weight (Lbs)	Uniform Load Capacity (Lbs) *
HBS-DS2FW-23-18-H-132-PG	23" (584mm)	18" (457mm)	24" (610mm)	4	39.80	2042 *
HBS-DS2FW-23-24-H-132-PG		24" (610mm)			40.67	1531 *
HBS-DS2FW-23-36-H-132-PG		36" (914mm)			42.33	1021 *
HBS-DS2FW-23-48-H-132-PG		48" (1219mm)			43.99	766 *
HBS-DS2FW-29-18-H-132-PG	29" (737mm)	18" (457mm)	24" (610mm)	4	41.58	2042 *
HBS-DS2FW-29-24-H-132-PG		24" (610mm)			42.41	1531 *
HBS-DS2FW-29-36-H-132-PG		36" (914mm)			44.08	1021 *
HBS-DS2FW-29-48-H-132-PG		48" (1219mm)			45.74	766 *
HBS-DS2FW-41-18-H-132-PG	41" (1041mm)	18" (457mm)	24" (610mm)	4	45.07	2042 *
HBS-DS2FW-41-24-H-132-PG		24" (610mm)			45.90	1531 *
HBS-DS2FW-41-36-H-132-PG		36" (914mm)			47.56	1021 *
HBS-DS2FW-41-48-H-132-PG		48" (1219mm)			49.22	766 *
HBS-DS3FW-53-18-H-132-PG	53" (1346mm)	18" (457mm)	36" (914mm)	6	62.23	2042 *
HBS-DS3FW-53-24-H-132-PG		24" (610mm)			63.06	1531 *
HBS-DS3FW-53-36-H-132-PG		36" (914mm)			64.72	1021 *
HBS-DS3FW-53-48-H-132-PG		48" (1219mm)			66.38	766 *

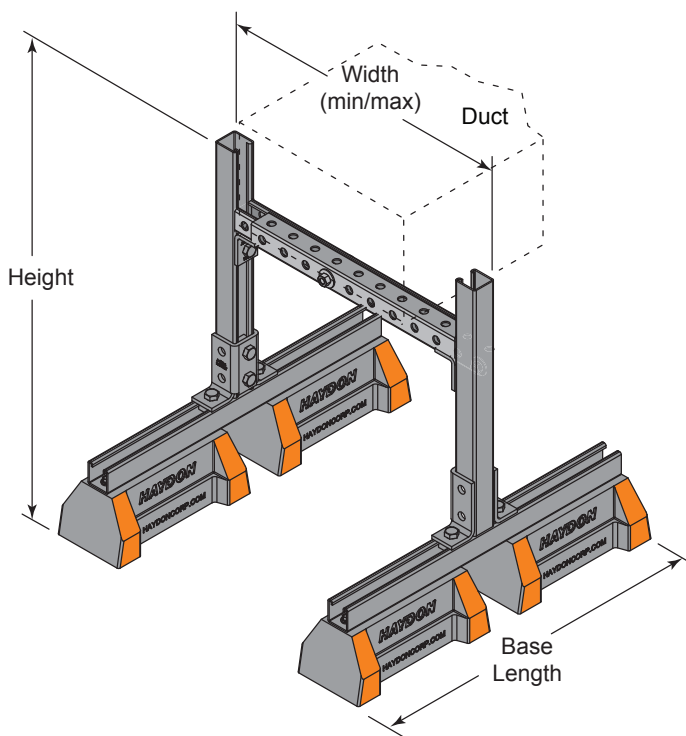
* This load is only for the capacity of the components in this assembly. Please consult roofing manufacturer or engineer for roof load capacity

HBS-DSAW ADJUSTABLE DUCT SUPPORT



The HBS-DSAW Series is designed specifically for supporting duct work. The telescopic cross beam provides easy size adjustments.

A wide range of support widths are provided from 19-¹/₄" to 103-⁵/₈"



Specifications – HBS-DSAW

Adjustable Width & Height.

All hardware required for assembly is included.

BASE MATERIAL - 100% recycled rubber, UV resistant

Telescopic Crossbeams

1-⁵/₈" H-132-RS3 Channel

HBS-DS-Duct Support Series With Adjustable Width and Height

Model No.	Width		Height	Base Length	No. of Bases	Weight (Lbs)	Uniform Load Capacity At Minimum Width (Lbs) *
	Minimum	Maximum					
HBS-DSAW-29-20-26-H-132-PG	19- ¹ / ₄ " (489mm)	26- ³ / ₄ " (679mm)	28.813" (732mm)	10- ⁷ / ₈ " (276mm)	2	29.61	1,909 *
HBS-DSAW-29-25-39-H-132-PG	24- ⁷ / ₈ " (632mm)	39- ⁷ / ₈ " (1013mm)		24" (610mm)	4	31.19	1,477 *
HBS-DS2AW-29-38-62-H-132-PG	38" (965mm)	62- ³ / ₈ " (1575mm)		36" (914mm)	6	46.47	967 *
HBS-DS3AW-29-63-103-H-132-PG	62- ³ / ₈ " (1584mm)	103- ⁵ / ₈ " (2617mm)			6	66.90	589 *
HBS-DSAW-36-20-26-H-132-PG	19- ¹ / ₄ " (489mm)	26- ³ / ₄ " (679mm)	36" (914mm)	10- ⁷ / ₈ " (276mm)	2	30.61	1,909 *
HBS-DSAW-36-25-39-H-132-PG	24- ⁷ / ₈ " (632mm)	39- ⁷ / ₈ " (1013mm)		24" (610mm)	4	32.19	1,477 *
HBS-DS2AW-36-38-62-H-132-PG	38" (965mm)	62- ³ / ₈ " (1575mm)		36" (914mm)	6	47.47	967 *
HBS-DS3AW-36-63-103-H-132-PG	62- ³ / ₈ " (1584mm)	103- ⁵ / ₈ " (2617mm)			6	67.90	589 *

* This load is only for the capacity of the components in this assembly. Please consult roofing manufacturer or engineer for roof load capacity

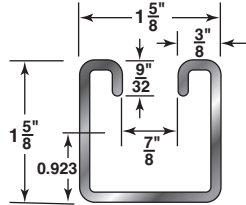
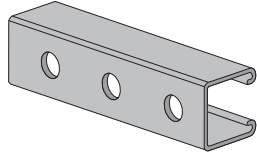


H-BLOCK PRODUCT ACCESSORIES

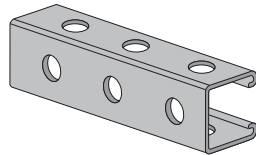
H-132-RS

1⁵/₈" X 1⁵/₈" 12 Gauge Channel

Stocked in pre-galvanized, plain, powder coated Supr-Green, zinc trivalent, PVC coated & aluminum, in 10 & 20 ft. lengths. Note: Also available in Stainless Steel 304 & 316 Alloys. Other materials, finishes & lengths are available upon request.



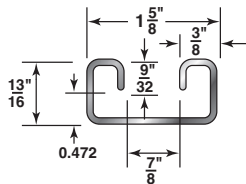
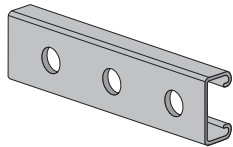
H-132-RS3



H-164-RS

1³/₁₆" X 1⁵/₈" 14 Gauge Channel

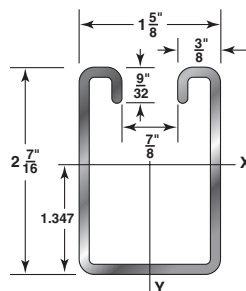
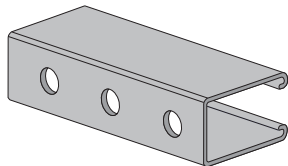
Stocked in pre-galvanized, plain, powder coated Supr-Green, zinc trivalent, PVC coated & aluminum, in 10 & 20 ft. lengths. Note: Also available in Stainless Steel 304 & 316 Alloys. Other materials, finishes & lengths are available upon request.



H-122-RS

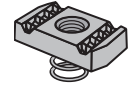
2⁷/₁₆" X 1⁵/₈" 12 Gauge Channel

Stocked in pre-galvanized, plain & powder coated Supr-Green, in both 10 & 20 ft. lengths. Note: Also available in Stainless Steel 304 & 316 Alloys. Other materials, finishes & lengths are available upon request.



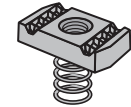
Short Spring

Cat. No.	Size	Thd.	Thk.	Wt./100 Pcs.	Channel
N-812	1/2"	13	3/8"	9	H-164



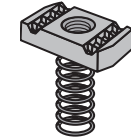
Regular Spring

Cat. No.	Size	Thd.	Thk.	Wt./100 Pcs.	Channel
N-822	1/2"	13	3/8"	10	H-132
N-823	1/2"	13	1/2"	13	



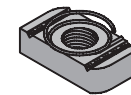
Long Spring

Cat. No.	Size	Thd.	Thk.	Wt./100 Pcs.	Channel
N-832	1/2"	13	3/8"	10	H-122
N-833	1/2"	13	1/2"	13	



Top Spring

Cat. No.	Size	Thd.	Thk.	Wt./100 Pcs.	Channel
TSN-802	1/2"	13	3/8"	9	All H-Strut



All-Thread Rod

Diameter	Thd.	Wt./100 Ft.
1/2"	13	54

LENGTH: 6', 10' & 12'



Flat Washers

Size	Wt./100 Pcs.
1/2"	3.5



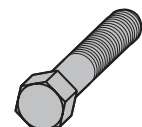
Hex Nuts

Size	Wt./100 Pcs.
1/2"	4.8



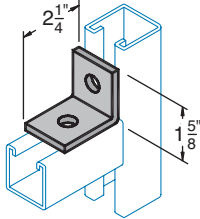
Hex Head Cap Screws

Diameter	Length	Wt./100 Pcs.
1/2"	1"	9.1
1/2"	1 1/4"	10.0
1/2"	1 1/2"	11.6
1/2"	1 3/4"	13.2
1/2"	2"	14.7

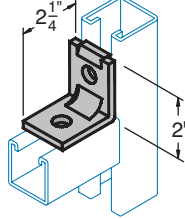


H-BLOCK PRODUCT ACCESSORIES

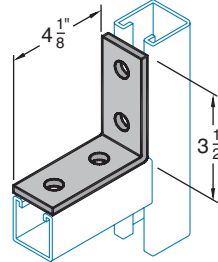
A-301
Two Hole
Corner Angle



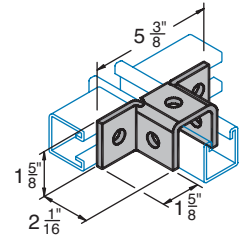
A-303
No-Twist Corner
Angle (1 indent)



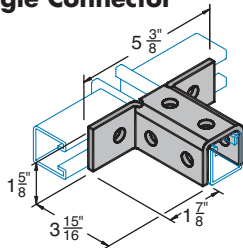
A-311
Four Hole Angle



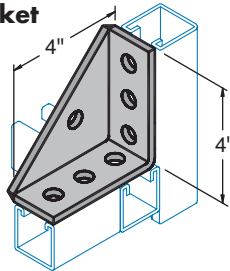
A-327
Five Hole Double
Angle Connector



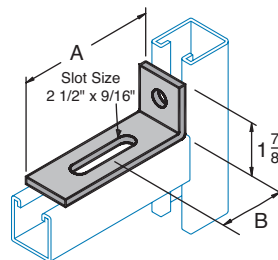
A-327-2
Eight Hole Triple
Angle Connector



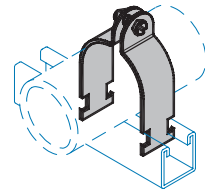
A-335
Universal Shelf
Bracket



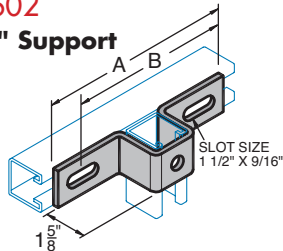
A-336
Slotted Angle



C-1100
EMT Clamps

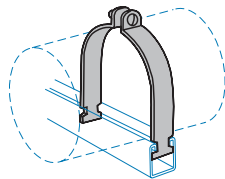


B-602
"U" Support

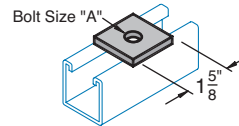


Catalog No.	A	B	Wt./100 Pcs.
B-602-1	7 1/4"	4 1/8"	103
B-602-2	8 1/2"	5 3/8"	115
B-602-3	10 3/8"	7 1/4"	135

C-1101
Tubing Clamps
C-1102
Rigid Conduit Clamps
C-1104
Universal Clamps

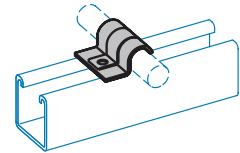


F-201
Square
Washer

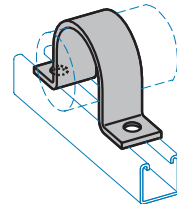


Catalog No.	A	Wt./100 Pcs.
F-201	1/4"	18
F-201	5/16"	18
F-201	3/8"	18
F-201	1/2"	17
F-201	5/8"	16
F-201	3/4"	15
F-201	7/8"	14

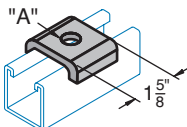
C-1109
1-Hole Tubing Clamps



C-1108
Pipe Straps

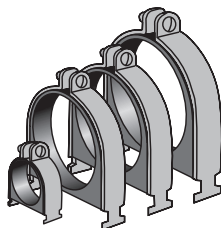


SW-201
Saddle
Washer



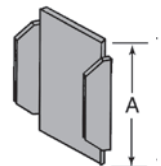
Catalog No.	A	Wt./100 Pcs.
SW-201-1/4	5/16"	14
SW-201-3/8	7/16"	14
SW-201-1/2	9/16"	14
SW-201-5/8	1 1/16"	13
SW-201-3/4	1 3/16"	13

C-1000
Cushion Clamps for Tube
C-2000
Cushion Clamps for Pipe



1000 Series
End Cap

Catalog No.	Use With H-STRUT	A	Wt./100 Pcs.
1000-EC-1	H-132	1 5/8"	7
1000-EC-5	H-164	1 3/16"	4
1000-EC-6	H-122	2 3/8"	16





TERMS & CONDITIONS OF SALE

These terms and conditions of sale supersede all previous listings. No order shall be binding upon us until accepted in writing by an authorized official at our home office. Goods are tendered or delivered and work is undertaken in every case only upon and subject to these terms and conditions. We shall not be liable for any delay or default in performance due to any cause arising or attributable to any event or omission beyond our reasonable control. All prices herein are suggested prices.

Prices: All prices are based on our standard packing and subject to change without notice.

Terms: Invoices are due and payable on net 30 days basis, unless otherwise agreed to in writing. Failure to make payment when due shall entitle us to suspend further deliveries or to cancel a contract.

Taxes: Any taxes, where applicable be they Federal, State, or Local are for the account of the buyer, and will be added to invoice.

Freight: Unless specifically stated in our proposal, all shipments are F.O.B. our dock or point of shipment. Routing will be at our discretion, unless otherwise agreed to in writing.

Title: Complete title to all goods shall pass to the customer upon delivery to the carrier.

Risk: Loss or damage to the goods shall pass to the customer upon delivery to the carrier.

Damage Or Loss In Transit: Regardless of freight payment, all risk or loss damage in transit shall pass to the purchaser. Although we will assist buyer in making his claims, we assume no liability for subsequent shortage or damage in transit.

Cancellation: An order may only be cancelled upon receipt of written agreement from us. All costs incurred by such cancellation are to be paid by the purchaser.

Returned Merchandise: All materials are carefully inspected before shipment, but it is not always possible to detect imperfections, therefore the only guarantee that is given is to replace such materials as prove to be defective or to allow credit for their return at our option. If materials appear defective, buyer should discontinue their use and notify us immediately so that we can investigate. We will not allow any claim for labor or expense occasioned by the use of defective materials nor be responsible for damages beyond the price of defective materials. Claims for defective materials should be made within 30 days after receipt of materials. We will not accept returns without our written permission.

Transportation Claim: The carriers are responsible for materials lost or damaged enroute, consignee (buyer), as required by uniform Bill of Lading must immediately notify the carrier's agent at destination in writing in order to substantiate formal claim, upon presentation by buyer.

Liability For Misuse: Purchaser agrees to protect, defend, indemnify and hold us harmless from any and all liability or alleged liability and expense, including attorney's fees, arising from personal injuries, including death, or damage to property, caused by reason of the improper and/or negligent installation or use of our products.

Specifications: Specifications and dimensions are subject to change without notice. We do not warrant the compliance of our products to specifications other than our own.

Warranty: This warranty is directed solely to those buyers purchasing our products for use in the fabrication and/or construction of products for sale to others. Nothing herein shall be construed to extend this warranty to "Consumers". Our products are warranted against defect in manufacturing for a period of one year. This warranty is limited to the replacement of defective parts, or refund of the purchase price at our discretion. This is the buyers sole and exclusive remedy and we shall not be liable for labor charges and/or other damages or expense arising from the use of defective material, for any damage, consequential or otherwise, of any kind.

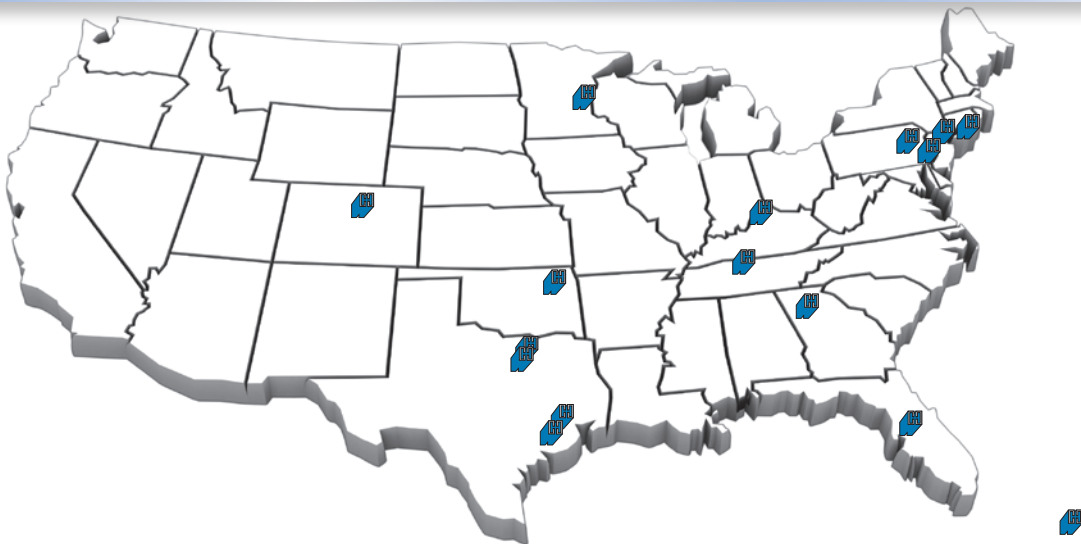
This is our sole warranty. We make no other warranty of any kind, expressed or implied, and all implied warranties of merchantability and fitness for a particular purpose which exceed our aforesaid obligation are hereby disclaimed by us and excluded from this warranty.

*On lengths of 36" or longer, 100 pieces or more inquire for quantity discounts. Standard cutting tolerance is plus or minus 1/16". when required to cut from standard stock lengths of 10' or 20' customer will be charged for scrap resulting from cutting. Scrap will only be shipped if requested. Cutting charges will be invoiced as a separate item.

All of our products are Union Made.



H-STRUT REPRESENTATIVES



Electrical Representatives

Bishop & Brogdon [Stocking Location]
 790-B Great Southwest Pkwy
 Atlanta, GA 30336
 Phone: 404-494-4333
 Fax: 404-344-3696

CET & Assoc., LLC
 4704 Harlan Street Ste 415
 Denver, Co. 80212
 Phone: 303-758-5530
 Fax: 303-758-5627
 Website: www.cetandassociates.com

Current Electrical Sales
 2090 Wheatsheaf Lane
 Philadelphia, PA 19124
 Phone: 215-289-5526
 Fax: 215-289-5529

Electrical & Telecom Sales
 8022 South Memorial STE 207
 Tulsa, OK 74133
 Phone: 918-254-5031
 Fax: 918-254-5039

Emmco & Associates
 3483 W.12th Street
 Houston, TX 77008
 Toll Free: 800-275-2780
 Phone: 713-880-8882
 Fax: 713-880-8572
 Website: www.emmco.com

Florida Electrical Sales [Stocking Location]
 8100 E. Broadway Avenue STE E
 Tampa, FL 33619
 Phone: 813-881-9378
 Fax: 813-881-9624

Glenn International, Inc.
 Rosendo Vela Acosta St. Bldg #9
 Jardines de Carolina, Carolina, PR 00987
 Phone: 787-757-6000
 Fax: 787-769-1851
 Website: www.glenninternational.com

Jenkins & Associates
 1122 Foster Avenue
 Nashville, TN 37210
 Phone: 615-256-7606
 Fax: 615-242-1898
 Website: www.jenkinsandassoc.com

Power Tech Electrical Sales
 2005 Mc Daniel Drive, Suite 122
 Carrollton, TX 75006
 Phone: 972-421-0871
 Fax: 972-421-0877

Summit Sales & Marketing [Stocking Location]
 629 Bergman St.
 Louisville, KY 40203
 Phone: 502-636-3339
 Fax: 502-636-2575
 Website: www.summitsales-mkt.com

Mechanical Representatives

Keystone Sales & Assoc.
 441C County Line Rd
 Gilbertsville, PA 19525
 Phone: 800-220-1025
 Fax: 610-369-1612
 Website: www.uskeystonesales.com

Kingsway Marketing LLC
 800 Mendelssohn Ave N.
 Minneapolis, MN 55427
 Phone: 952-829-7237
 Fax: 763-225-8388

RSJK Inc.
 122 Little Bussen
 Fenton, MO 63026
 Phone: 636-326-4545
 Fax: 636-326-4540

Venco Sales, Inc
 755 Park Ave. Suite 300
 Huntington, NY 11743
 Phone: 631-754-0782
 Fax: 631-754-4659
 Website: www.vencosales.com

Refrigeration Representatives

Superior Sales&Service Group
 430 Surface
 Alvin, TX 77511
 Phone: 832-418-1412
 Fax: 281-996-0646

Updated Representatives Information

Please visit our web site for current representative information and their territories.
www.haydoncorp.com

HAYDON CORPORATION

415 Hamburg Turnpike
Wayne, N.J. 07470

HAYDON CORPORATION

1139 W. N. Carrier Parkway
Grand Prairie, TX 75050

(In N.J.) 973/904-0800
(Outside N.J.) 1-800-2-HAYDON
Fax: 973/904-0016

Email: sales@haydoncorp.com

Website: www.haydoncorp.com

Supplied By:



100% Recycled Rubber! • LEED® Certifiable • UV Resistant