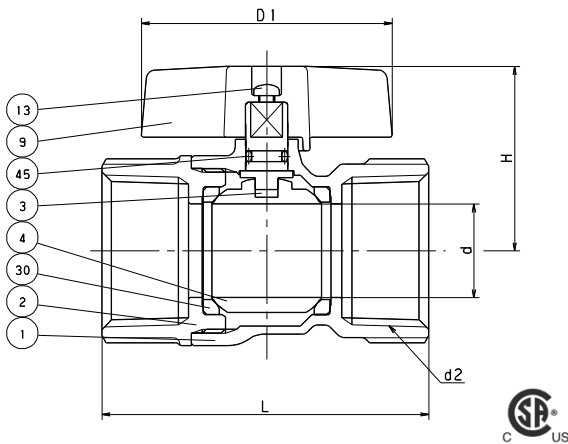


FORGED BRASS GAS BALL VALVE

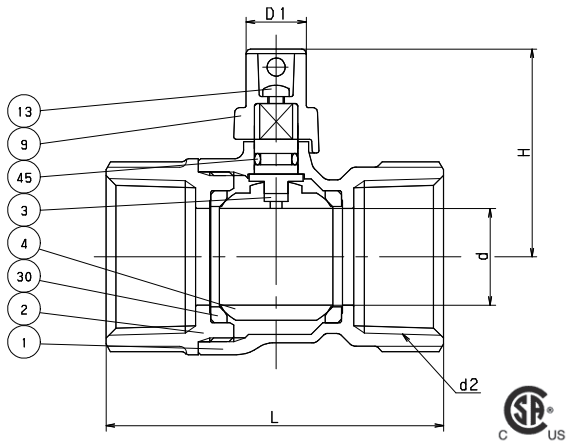
WING HANDLE / SQUARE OPERATING NUT

Two Piece Body • Regular Port
CSA

CODE # 60 FIPS x FIPS



CODE # 60SQ FIPS x FIPS



STANDARDS

END TO END	KITZ
END CONNECTION	ANSI B1.20.1
WALL THICKNESS	KITZ
DESIGN	MSS SP-110

PRESSURE/TEMPERATURE

175 PSI - NON-SHOCK COLD WATER, OIL OR GAS

See Certification below.

MATERIAL LIST

NO.	NAME OF PART	SPECIFICATION
1	BODY	FORGED BRASS (B283, C37700)
2	BODY CAP	FORGED BRASS (B283, C37700)
3	STEM	BRASS ROD (B124, C37700)
4	BALL	(1) FORGED BRASS (B283, C37700)
9	HANDLE	ALUMINUM DIE-CAST (B85)
13	HANDLE BOLT	STAINLESS STEEL (A276 TYPE 304)
30	BALL SEATS	PTFE
45	O-RING	NBR

NOTES: (1) CR. PLATING

DIMENSIONS • WEIGHTS • QUANTITIES

	d2		d	H	D1	L	APPROX. NET WT.	CARTON QTY
	SIZE							
in.	3/8		0.39	1.19	1.77	1.81	26	96
mm.			9.9	30.2	44.0	45.0	11.8	
in.	1/2		0.49	1.23	1.77	2.2	26	72
mm.			12.4	31.2	44.0	55.9	11.8	
in.	3/4		0.57	1.45	2.17	2.39	32	60
mm.			14.5	36.8	55.1	60.7	14.5	
in.	1		0.77	1.59	2.17	2.82	39	48
mm.			19.6	40.4	55.1	71.6	17.7	

CERTIFICATIONS:

CSA (US/C) -40°C~65°C (-40°F~149°F)
 CGA 9.1b-2001/ANSI 21.15b-2006 - .5 PSI
 CGA CR 91-002 - 2 PSI
 ASME B16.44 - 5 PSI
 CAN/CGA 3.16-M88 - 125 PSI
 ASME B16.33-2002 - 125 PSI